

East Gippsland New Economy Symposium – Day 1

Sustainable Agriculture

Is there a Farm Forestry future for East Gippsland ?



- **Gippsland Farm Plantations**
- **Gippsland Agroforestry Investments**
- **Landcare (various roles)**
- **Gippsland Agroforestry Network**
- **Master Tree Growers**

What is 'farm forestry' ?

'Farm Forestry' and 'Agroforestry' ... and 'Landcare plantings'

Farm Forestry – what you can sell (timber, carbon credits, tannins, seed)

Agroforestry – integration with traditional farming (shade, shelter and fodder sources)

Landcare plantings – protecting natural assets , conservation,

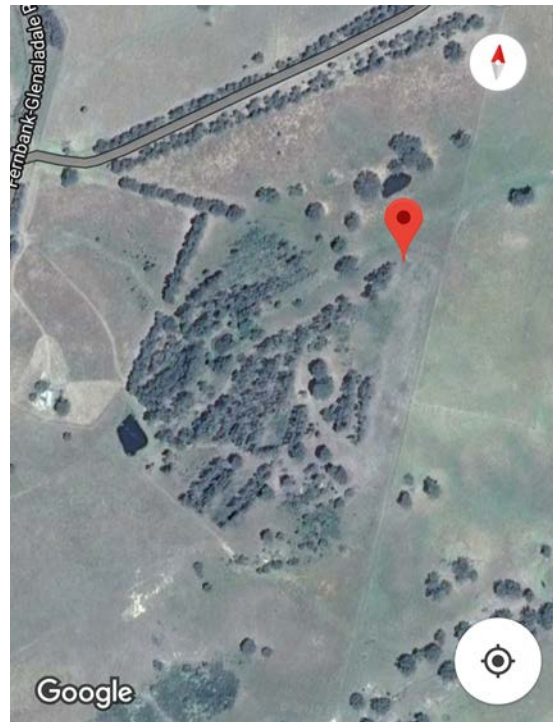
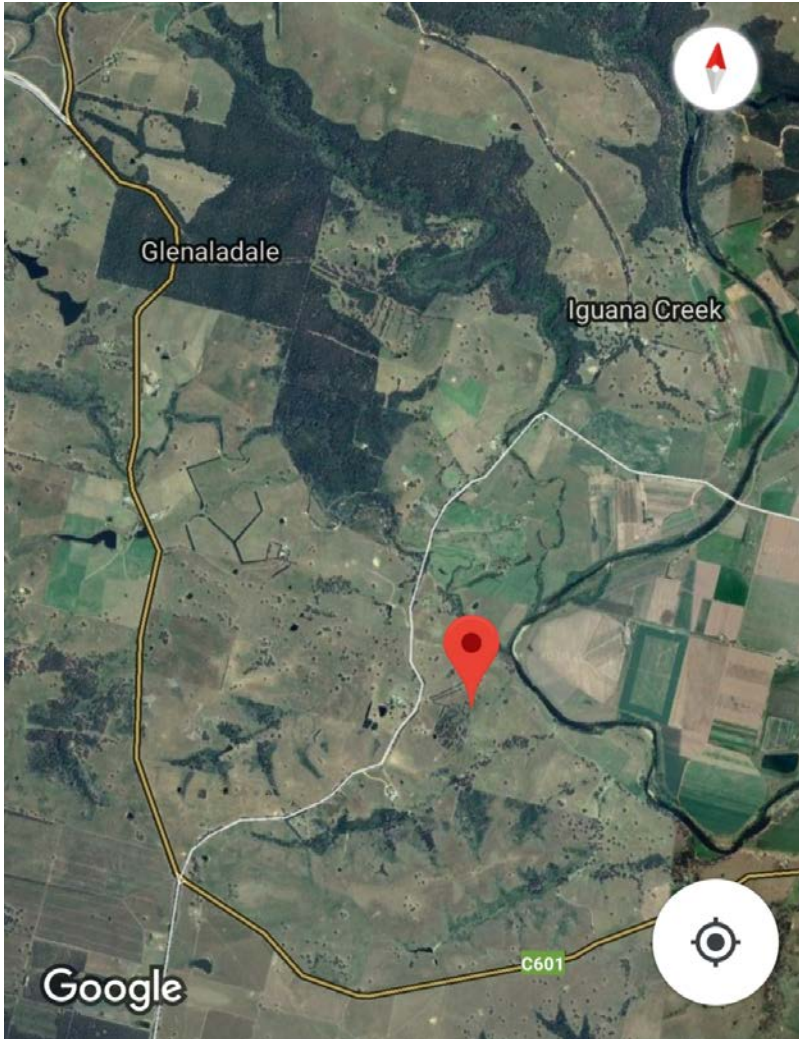


Stephenson property – The Fingerboards

6 Hectares

1998-1999

Blue Gum, Shining Gum, Red Ironbark, Manna Gum, Spotted Gum, Silvertop Ash, Southern Mahogany etc





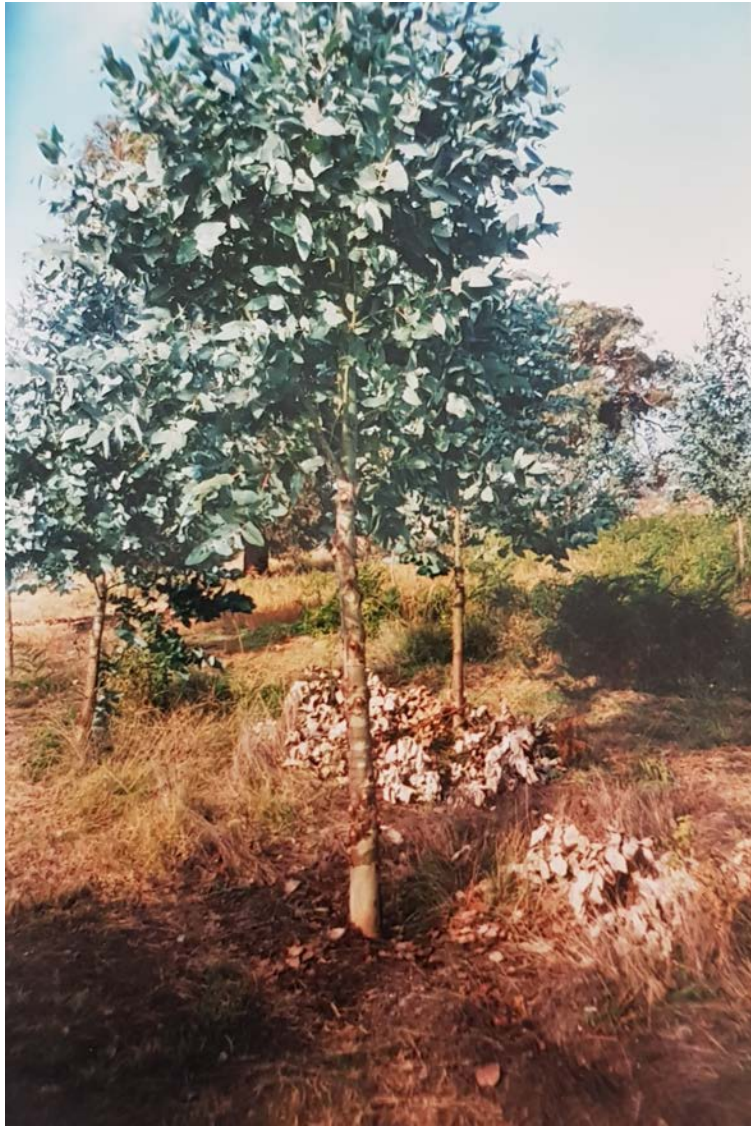
1998





2000







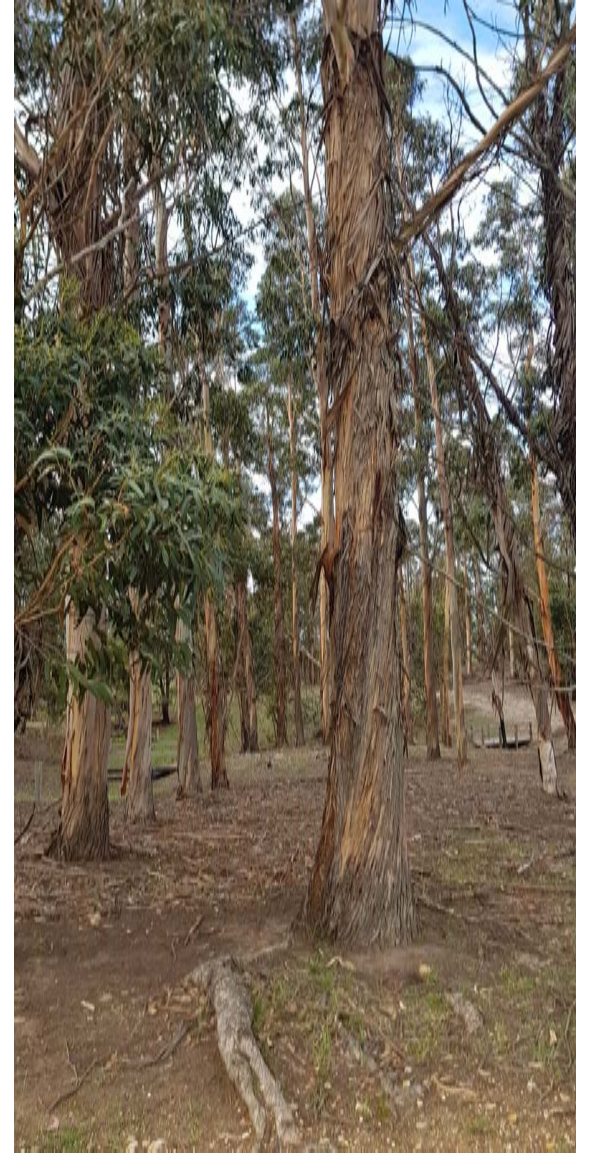
1997



2019









2014





Red Ironbark – *Eucalyptus tricarpa*







**Only limited by your imagination ,
enthusiasm .. And occasionally red tape !**



Quick Summary on our Farm Forestry journey

- It requires planning and thought , but it's not rocket science
- You are only limited by your imagination and potential markets
- You will attract wildlife
- People will expect free timber , make them earn it
- Weeds, floods and fire are probable more than possible
- Our venture has significantly underperformed, however it will still prove to have been a worthwhile exercise
- The 'loss' to traditional farming enterprises is almost negligible
- The venture being 'profitable' depends on how you rate your own time
- I am extremely disappointed we didn't go harder between 2000 and 2019 with local hardwoods and more revegetation and remnant fencing







Frank and Sharon Hirst – Ranceby South Gippsland

- Steep slopes
- Dorpers and young beef cattle
- Concerned about loss of tree cover and subsequent erosion over 100 years
- 20 hectares under trees and 40 hectares pasture
- Began growing trees in 1990
- Keen focus on long term biodiversity spin-offs





30 years on

‘we have little doubt that without the replacement of trees in this landscape, at least strategically, agricultural production is not sustainable’



- Importance of whole farm planning and photo points etc
- Objectives were to
 1. hold soil together
 2. Nest egg
 3. ‘Pleasantville’ for humans and animals
 4. Pruning and thinning are important if aiming for sawlog production

Frank has SOLD timber to neighbours, particularly posts and poles, he has had grown and built his own deck around the house

Frank has just sold 32 ton of Shining Gum to ASH in Heyfield and they have expressed interest in more !

Lets not beat around the bush





Jobs !

in planning , site preparation, establishment, growing (nursery) ,
thinning and pruning, harvest, marketing ... and so on





Trees for a Productive Environment

Landcare Group

AFG Branch



The Australian Master TreeGrower
Since 1996



100 Courses
>2000 Participants

