



CIRCULAR ECONOMY IN EAST GIPPSLAND

Integrating & localising food, water, energy, transport, housing & work

Steven Liaros & Nilmini De Silva

Directors of PolisPlan

Members NENA Cities and Communities Hub

East Gippsland New Economy Symposium,

11 April 2019

who we are

strategic town planners and
engineers

working with local
government, research
institutions, community groups
and private land developers



the problem
we are solving

replacing silo thinking with
systems thinking



A LINEAR ECONOMY



Take



Make & Use



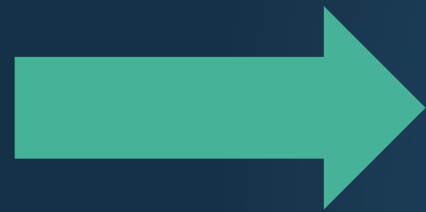
Dispose

A CIRCULAR ECONOMY RECIRCULATES EVERYTHING LOCALLY



YOUR TOWN OR REGIONAL ECONOMY

Minimise imports



- Energy
- Food
- Housing

- Household needs



Maximise exports

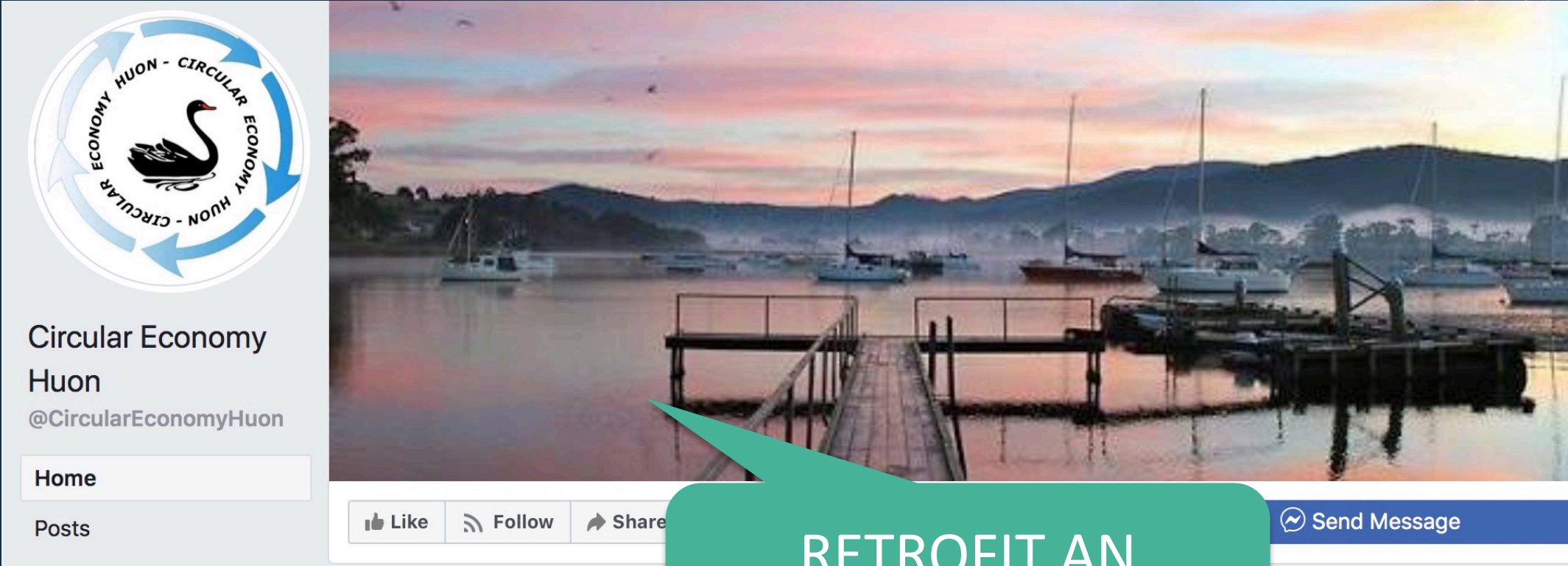


- Extractive industries
- Tourism



Convert waste to resource

CIRCULAR ECONOMY HUON

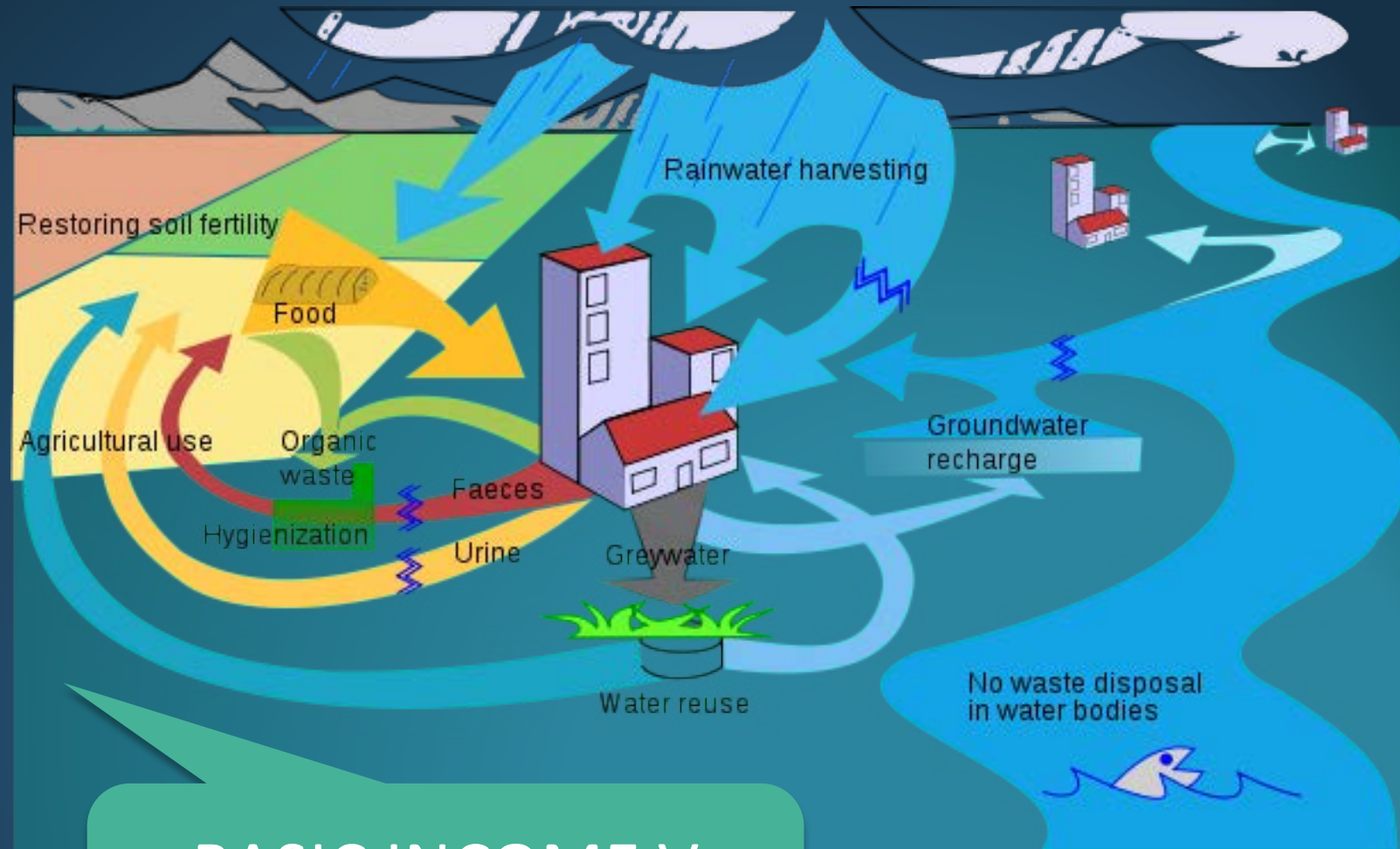


The image shows a Facebook profile for 'Circular Economy Huon'. The profile picture is a circular logo with a swan in the center, surrounded by the text 'CIRCULAR ECONOMY HUON - CIRCULAR ECONOMY HUON' and four blue arrows forming a circle. The name 'Circular Economy Huon' and the handle '@CircularEconomyHuon' are displayed below the profile picture. The navigation menu includes 'Home' and 'Posts'. The main content area features a scenic photograph of a harbor at sunset with several sailboats docked at a wooden pier. Below the photo are interaction buttons for 'Like', 'Follow', 'Share', and 'Send Message'.

RETROFIT AN EXISTING TOWN

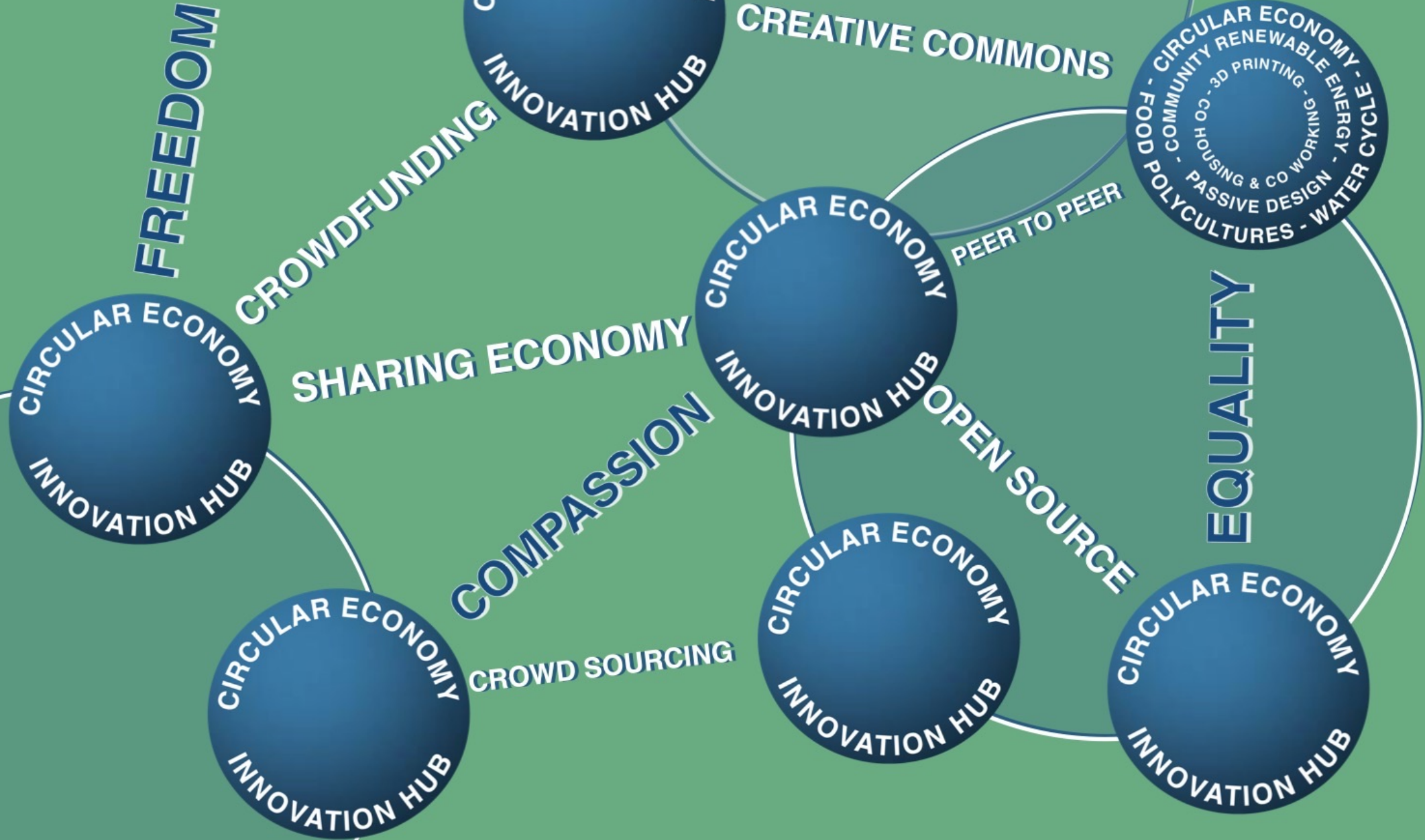
BUILDING A NEW VILLAGE

designing **co-working** and **co-living** spaces for up to 200 people with **water** and **energy** micro-grids and a local agricultural **food** system.



BASIC INCOME V
BASIC NEEDS

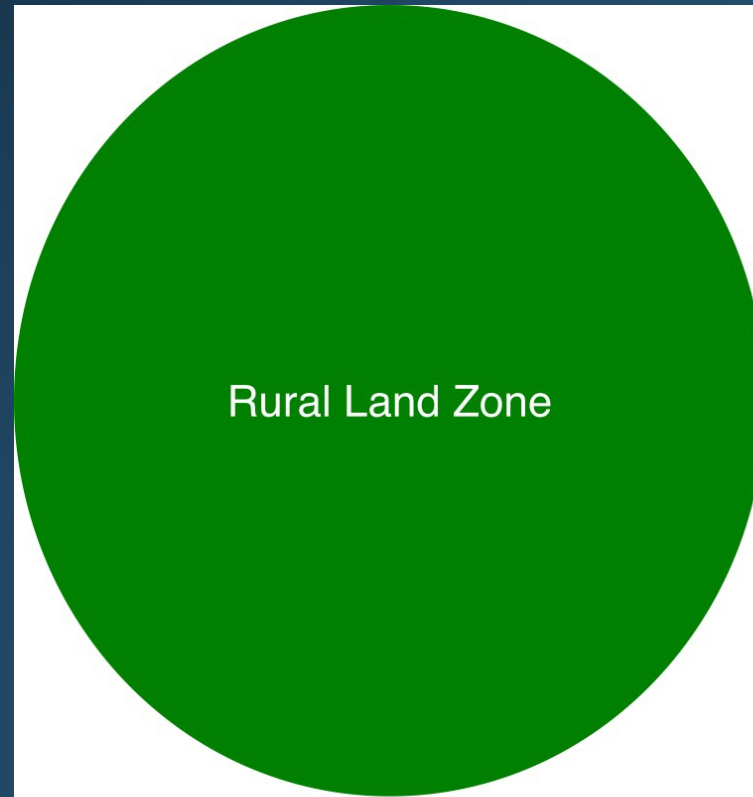
AN INTERNET OF CITIES



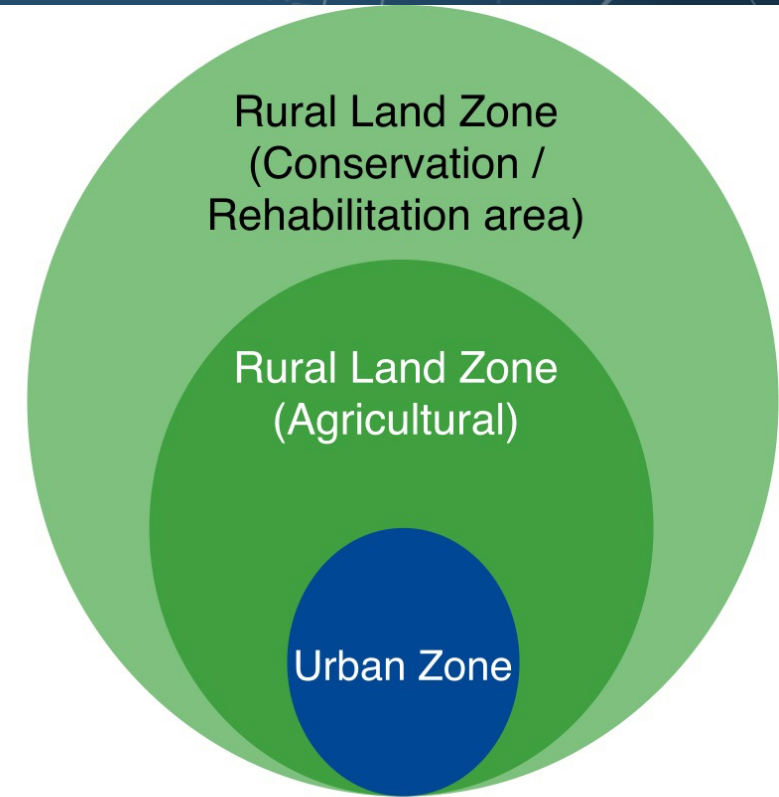
RURAL LAND

minimum 40 ha of rural land

approximately 5 hectares for
co-working and co-living hub



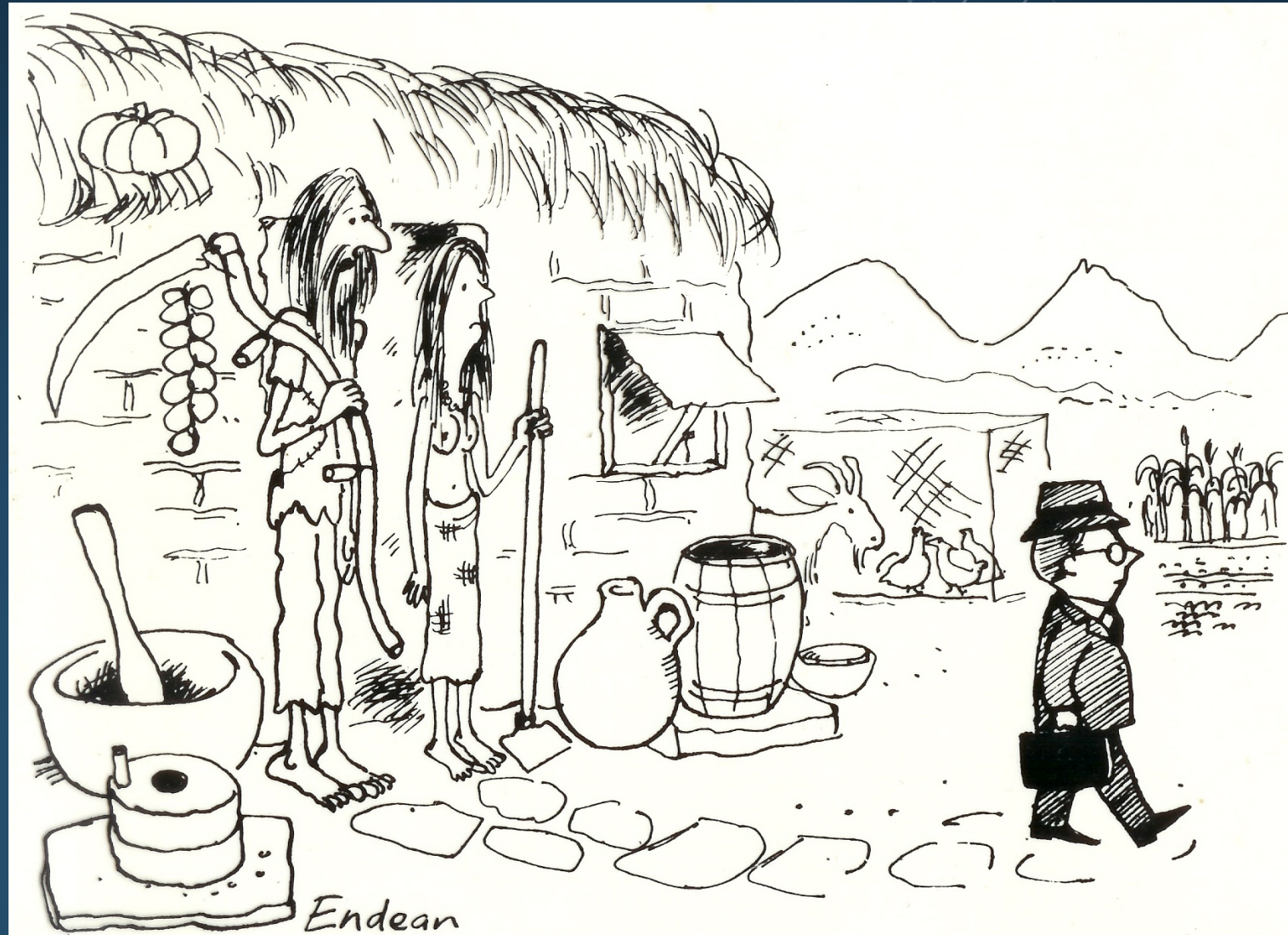
BEFORE



AFTER

what is different?

- Not going back ... going forward
 - co-living developments
- Abundance NOT scarcity
 - establishing a replicable process embedded in strategic planning framework.



Endean

“Well, we can’t really stop him from seeking an alternative lifestyle.”

why now?

- Energy revolution
- Information revolution
- Transport revolution
- Necessity for regenerative agriculture revolution



the journey so far

We have connected with a number of researchers who have expressed interest to collaborate



CSIRO Urban Living Labs



the journey so far

Submissions and discussions
with various Councils

**MITCHELL
SHIRE COUNCIL**



**Bellingen Shire
COUNCIL**



**Murrindindi
Shire Council**



**TWEED
SHIRE COUNCIL**



Cardinia



**HORNSBY
SHIRE COUNCIL**

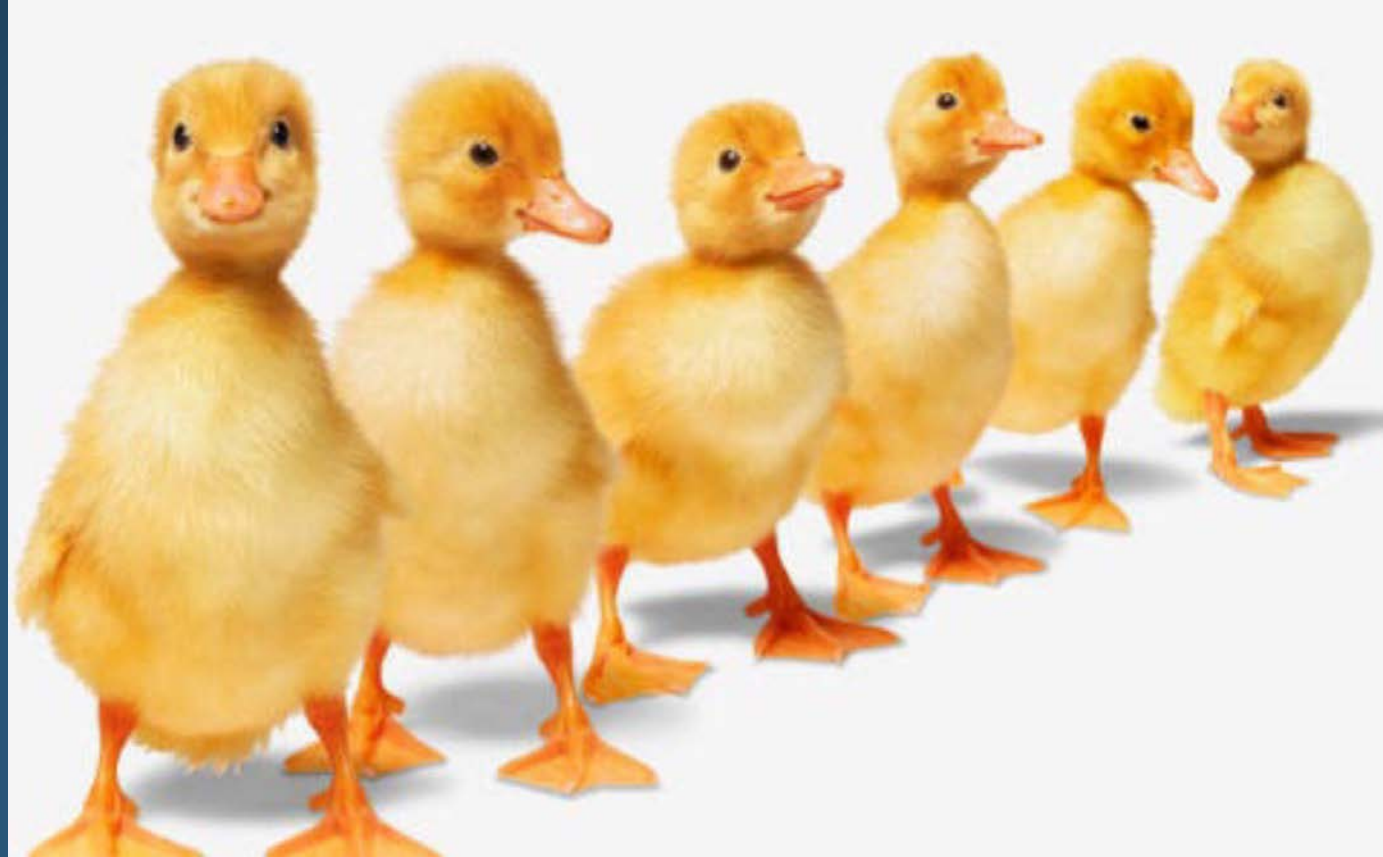


Central
Coast
Council



Bringing everyone along

- Council
 - Local community
- Technical and creative expertise
 - Investors



questions

